
TOWNSHIP OF CHATSWORTH



COMMUNITY PROFILE

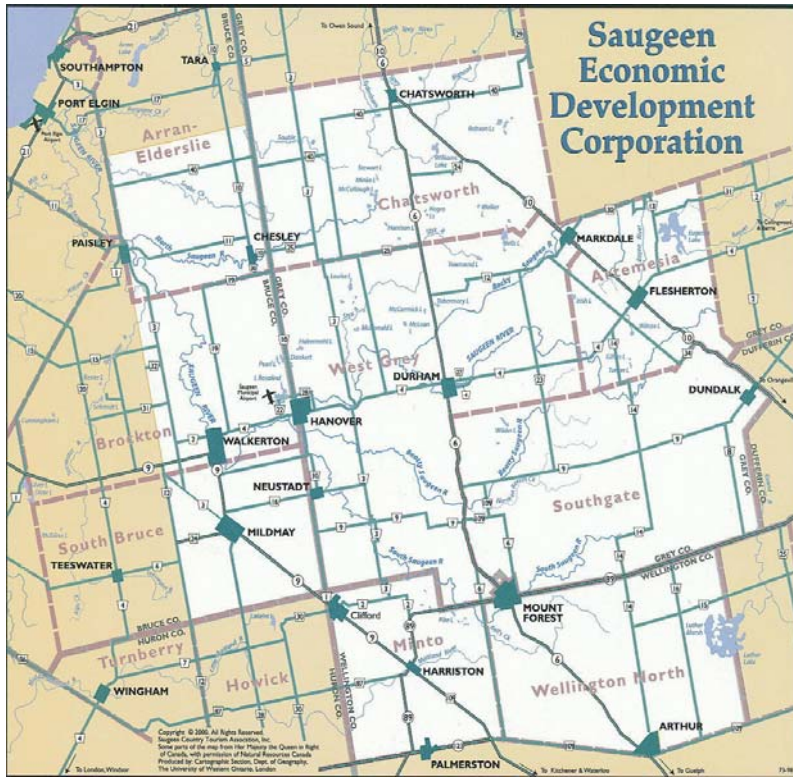
For More Information Contact:

SAUGEEN
ECONOMIC DEVELOPMENT CORPORATION
A Community Futures Development Corporation
554 7th Avenue, Hanover, Ontario, N4N 2J7
Tel (519) 364-3694 Fax (519) 364-6384
www.sbdc.ca



LOCATION

With a population of 36,000, the Saugeen community is a group of neighbouring towns, townships and municipalities with a shared economic base, market place, workforce, and history. Residents of the Saugeen City move freely between the towns, townships and municipalities for goods and services.



**Highway Distances from
Chatsworth to Major Centres**

	km	mile
Windsor/Detroit.....	375	235
Sarnia/Port Huron...	240	150
London.....	175	110
Kitchener.....	130	80
Hamilton.....	190	120
Fort Erie/Buffalo...	285	180
Toronto.....	205	125
Oshawa.....	250	155
Ottawa.....	605	375
Montreal.....	750	465

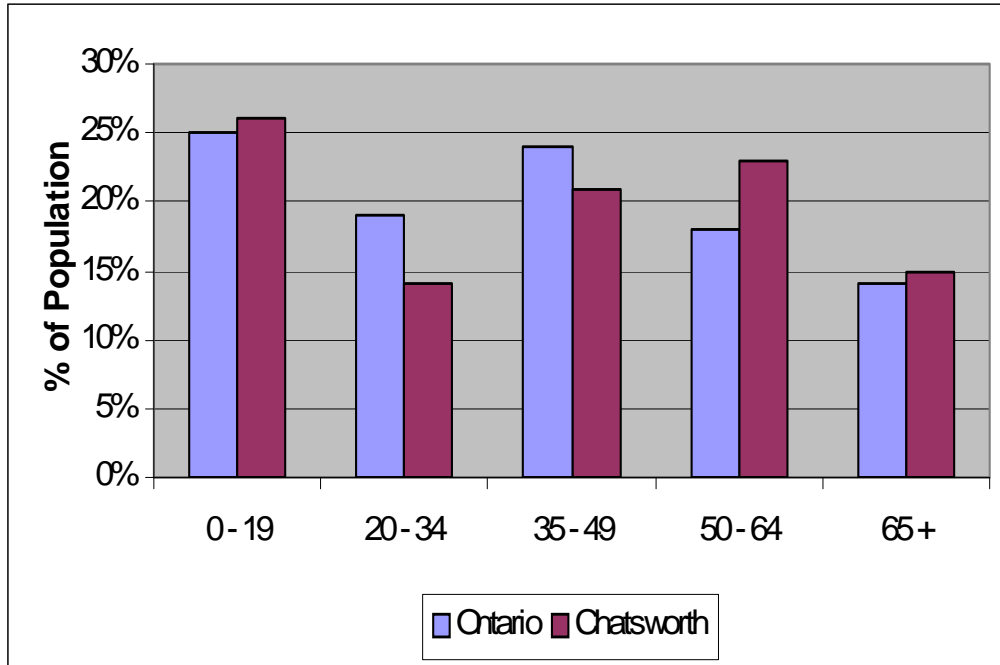
The Township of Chatsworth is located on the western boundary of Grey County, well situated mid-way between the major centres of southern Ontario and popular recreational areas along the eastern shore of Lake Huron and southern Georgian Bay. It is only a 1½ to 2 hour drive from the township to cities in Canada’s “Golden Horseshoe” industrial heartland, like Toronto, Hamilton, and Kitchener-Waterloo. The City of Owen Sound offers Great Lakes port and Shipping facilities, as does the Town of Goderich situated approximately 100 kilometres to the southwest.

POPULATION

POPULATION BY FIVE-YEAR AGE GROUPS AND GENDER

Age Group	Both Genders	Male	Female
0 - 4	345	180	165
5 - 9	410	205	205
10 - 14	450	200	250
15 - 19	445	235	210
20 - 24	320	190	130
25 - 29	280	145	135
30 - 34	300	150	150
35 - 39	355	170	185
40 - 44	460	240	220
45 - 49	550	265	285
50 - 54	520	255	265
55 - 59	575	300	275
60 - 64	405	215	190
65 - 74	585	305	280
75+	390	180	210
Total Pop	6,390	3,235	3,160

POPULATION COMPARISON TO ONTARIO BY AGE GROUP

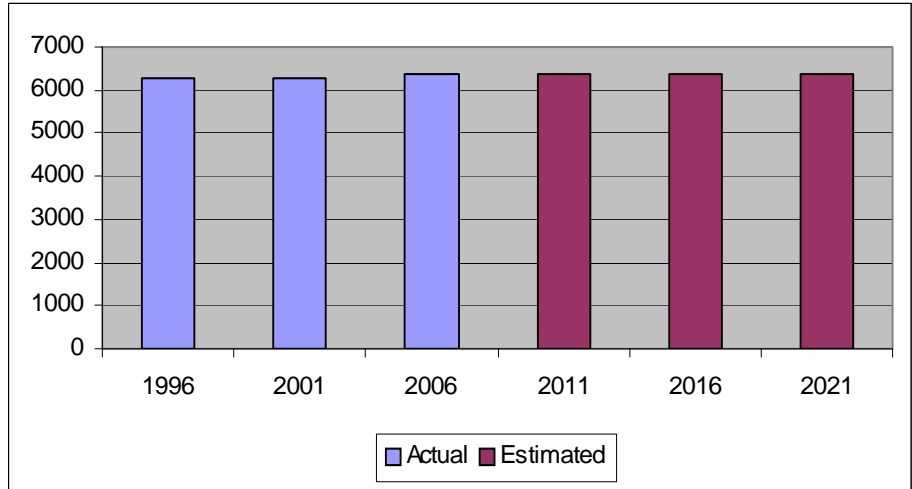


Source: Statistics Canada 2006

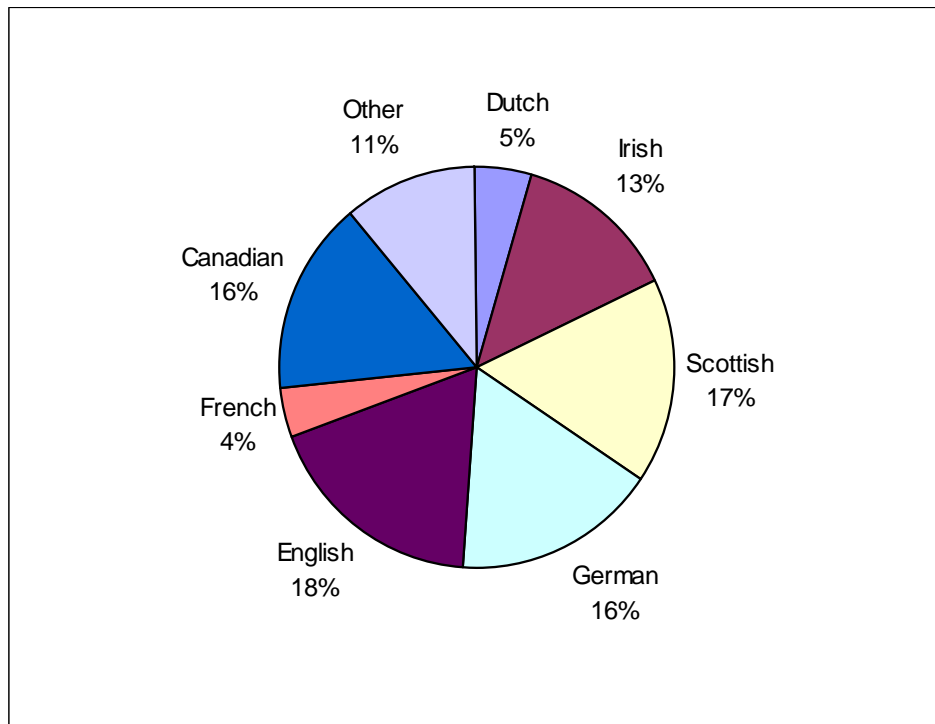
POPULATION

POPULATION GROWTH

1996.....6,278
2001.....6,280
2006.....6,390
2011.....6,392 est.
2016.....6,394 est.
2021.....6,396 est.



ETHNIC ORIGIN



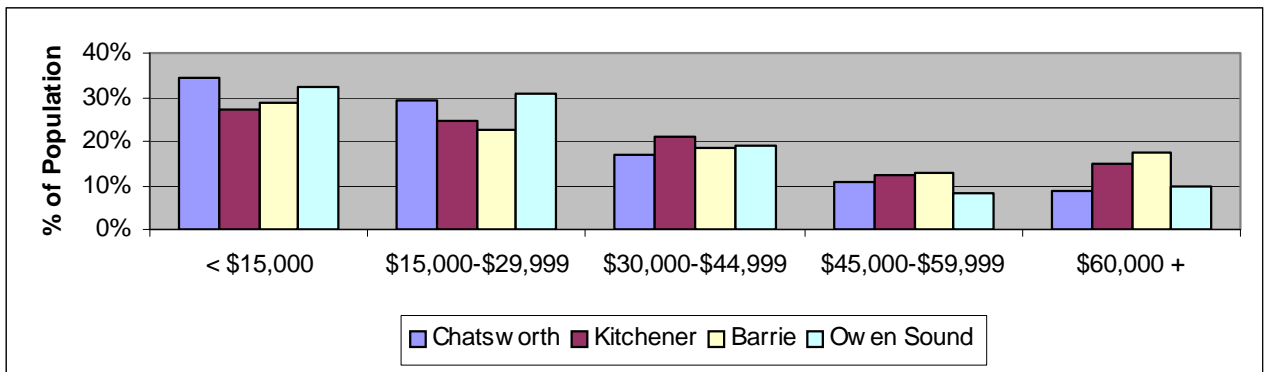
Source: Statistics Canada 2006



INCOME

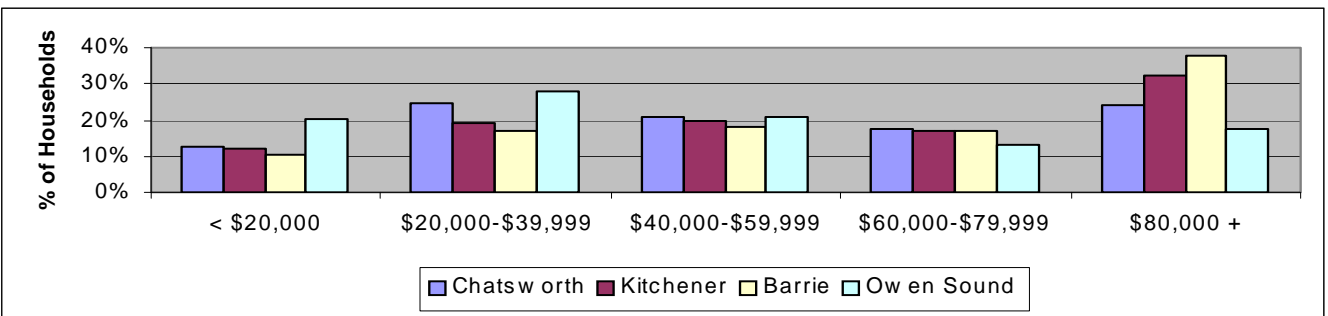
TOTAL INCOME BY GENDER AND INCOME GROUP

Income Group	Number of People					
	Male	Chatsworth		Kitchener	Barrie	Owen Sound
		Female	Total	Total	Total	Total
Under \$15,000	655	1,025	1,695	43,125	27,430	5,390
\$15,000 - \$29,999	725	745	1,455	39,065	21,680	5,155
\$30,000 - \$44,999	475	375	840	32,880	17,610	3,215
\$45,000 - \$59,999	390	150	535	19,230	12,135	1,365
\$60,000 and over	295	135	430	23,390	16,485	1,655
15+ with income	2,535	2,435	4,970	157,710	95,340	16,785
Average Income	\$32,683	\$22,495	\$27,691	\$35,648	\$35,737	\$29,093



HOUSEHOLD INCOME DISTRIBUTION

Income Level	Number of Households			
	Chatsworth	Kitchener	Barrie	Owen Sound
Under \$20,000	305	9,520	4,935	1,925
\$20,000 - \$39,999	580	15,460	7,955	2,620
\$40,000 - \$59,999	495	15,510	8,315	1,950
\$60,000 - \$79,999	410	13,445	7,835	1,245
\$80,000 and over	575	25,540	17,480	1,655
Total	2,370	79,485	46,515	9,380
Average Income	\$58,008	\$70,620	\$73,134	\$51,952



Source: Statistics Canada 2006

LABOUR

LABOUR FORCE 15 YEARS AND OVER BY INDUSTRY DIVISIONS

Industry Divisions	Total	% of Workforce	
		Chatsworth	Ontario
Manufacturing	530	15.2	13.7
Agriculture, Forestry Fishing and Hunting	290	8.3	1.7
Health Care and Social Assistance	415	11.9	9.3
Retail Trade	460	13.2	10.9
Other Services (Except Public Administration)	210	6.0	4.6
Construction	385	11.0	5.8
Accommodation and Food Services	195	5.6	6.3
Professional, Scientific and Technical Services	155	4.4	7.2
Administrative, Support, Waste Management and Remediation Services	115	3.3	4.8
Transportation and Warehousing	130	3.7	4.7
Wholesale Trade	110	3.2	4.7
Educational Services	120	3.4	6.6
Public Administration	130	3.7	5.3
Arts, Entertainment and Recreation	55	1.6	2.1
Finance and Insurance	85	2.4	4.8
Utilities	40	1.1	0.8
Information and Cultural Industries	25	0.7	2.6
Management of Companies and Enterprises	0	0.0	0.1
Real Estate and Rental and Leasing	25	0.7	1.9
Mining and Oil and Gas Extraction	10	0.3	0.4
Total Labour Force	3,485	100.0	100.0

LABOUR FORCE 15 YEARS AND OVER BY OCCUPATION AND GENDER

Occupation	Male	Female	Total
Sales and Service Occupations	275	480	760
Trades, Transport and Equipment Operators and Related Occupations	750	45	795
Occupations Unique to Primary Industry	245	115	360
Occupations Unique to Processing, Manufacturing and Utilities	215	100	315
Business, Finance and Administration Occupations	75	330	400
Management Occupations	150	130	285
Health Occupations	15	200	215
Social Science, Education, Government Service and Religious Occupations	35	165	195
Occupations in Art, Culture, Recreation and Sport	30	35	60
Natural and Applied Sciences and Related Occupations	85	20	105
Total Labour Force	1,870	1,615	3,490

Source: Statistics Canada 2006

LABOUR

Occupations and Wage Rates

The following is a list of prevailing wage rates for standard occupations determined by the Service Canada for the Grey-Bruce-Simcoe-Muskoka area, as of December 31, 2007. These wage rates are to be considered as guidelines only and specific information should be obtained from individual employers. Please note that current minimum wage in Ontario may not be reflected in this data.

<u>Occupation</u>	<u>Prevailing Wage Range</u>		<u>Average</u>
Accounting and Related Clerks	\$12.00	\$23.42	\$17.07
Administrative Clerks	\$11.50	\$24.31	\$16.99
Automotive Mechanical Installers and Servicers	\$8.75	\$19.50	\$12.25
Bookkeepers	\$11.00	\$20.85	\$15.38
Carpenters	\$13.00	\$30.80	\$19.91
Construction Trades Helpers and Labourers	\$12.00	\$26.80	\$17.05
Cooks	\$8.75	\$16.77	\$11.41
Data Entry Clerks	\$11.01	\$23.82	\$18.04
Dental Assistants	\$15.00	\$25.16	\$17.91
Early Childhood Educators and Assistants	\$9.25	\$20.07	\$13.60
Electricians (Except Industrial and Power System)	\$12.50	\$35.00	\$21.65
Elementary School and Kindergarten Teachers	\$18.83	\$39.16	\$28.71
Food and Beverage Servers	\$7.60	\$13.65	\$9.50
General Office Clerks	\$11.00	\$22.54	\$16.10
Heavy Equipment Operators	\$15.00	\$31.00	\$20.76
Industrial Electricians	\$20.16	\$37.00	\$25.88
Janitors, Caretakers and Building Superintendents	\$9.55	\$19.90	\$14.65
Manufacturing Managers	\$17.14	\$41.26	\$27.89
Material Handlers	\$11.50	\$20.60	\$15.53
Nurse Aides, Orderlies and Patient Service Associates	\$11.80	\$20.34	\$16.32
Plumbers	\$13.00	\$29.55	\$19.84
Receptionists and Switchboard Operators	\$10.00	\$19.08	\$13.98
Registered Nurses	\$22.50	\$40.00	\$32.12
Restaurant and Food Service Managers	\$10.72	\$20.12	\$13.72
Roofers and Shinglers	\$12.30	\$22.13	\$17.35
Secondary School Teachers	\$19.01	\$41.69	\$29.37
Shippers and Receivers	\$10.00	\$18.96	\$14.46
Truck Drivers	\$13.33	\$22.50	\$17.48
Welders and Related Machine Operators	\$12.88	\$22.53	\$17.49

CHATSWORTH BUSINESSES

Desboro Tire Sales Inc.

682024 Sideroad 6, RR # 1 Desboro, Ontario N0H 1K0 1-519-363-5682 www.desborotiresales.com.

Mac Taylor Corporation

RR 3 Holland Centre, Ontario N0H 1R0 519-794-2380 Fax 519-794-3701

Septic Systems, Sand, Gravel, Excavating, Backhoe, Bulldozing

www.mactaylor.com.

Seagull Data Services

John Flanagan

683289 Chatsworth Road 24, RR 1 Williamsford, Ontario N0H 2V0 519-794-2187

Fax: 519-794-2808

Products/Services: Database Consultancy, Printer Ink and Toner

www.seagulldata.com.

The Falls Inn

113 Robert St. Walters Falls, Ontario N0H 2S0 519-794-4338

www.thefallsinn.com.

Willard G Hallman Lumber Limited

844726 Hamill Road, RR #5 (Walters Falls) Chatsworth, Ontario N0H 1G0

Sawmilling, Logging, Forestry, Woodlot Management, Hardwood Lumber Wholesale.

www.hallmanlumber.com.

Kuhl Machine Shop

RR 2 Desboro, Ontario N0H 1K0 519-794-3758 Fax 519-794-3880

Certified Welding - Aluminum (CWB 47.2) and Steel (CWB 47.1)

Fabrication and Design Consultation

Licensed Millwrighting

Precision Machining (CNC Lathes, Mills and Horizontal Boring)

Shear, Bend and CNC Profile Cutting

Hydraulic Cylinder Build and Repair.

www.Kuhlmachineshop.com.

TRAINING AND EMPLOYMENT ASSISTANCE

Service Canada/Ministry of Training, Colleges and Universities (MTCU)

<http://www.ontario.ca/en/gic/004897>

Services available at this location:

- Answers to frequently asked questions about government services
- Referrals to government staff who can provide specialized help
- Access to government's Internet to search programs, services or staff
- Free government publications including Ontario Parks Guide, Fishing and Hunting Regulations, Power of Attorney Kits, etc
- Supply of and assistance with Application Forms for government services such as Birth and Death Certificates, Health Cards, Social Insurance Numbers, etc
- Order government publications electronically using POOL (Publications Ontario on-line), the Ontario government's virtual bookstore
- Access to Ontario Business Connects terminals or Web site to register/renew your business name, conduct a business name search and make your applications for Retail Sales Tax permit (RST), Employer Health Tax number (EHT) and register with the Workplace Safety and Insurance Board (WSIB)
- Access to [Life Events](#) information packages such as Losing Your Wallet and Getting Married
- Access to Online Government Services, including On-line Change of Address service
- Community Information and Bulletin Board
- File Landlord and Tenant Board applications
- Ministry of Labour Employment Standards Claim acceptance
- Ministry of Natural Resources Fish & Wildlife services, information and sales

For government services in Grey-Bruce call:

1 888 647-3654 Toll Free

(519) 371-6226

(519) 371-6336 Fax

YMCA Employment Services

The YMCA Employment Services with offices in Owen Sound, Hanover and Walkerton, provides free confidential employment counselling for both youth and adults. The program includes:

- a) **A RESOURCE CENTRE** offering free internet access, computers for word processing, job postings and newspapers.
- b) **EMPLOYMENT COUNSELLORS** who are available by appointment to help people identify career goals and offer support for a job search and assistance with resume preparation.
- c) **ON THE JOB TRAINING** for participants who meet program eligibility requirements.

For more information, visit www.ymcaowensound.on.ca

Saugeen Business Development Centre (SBDC)

554 7th Avenue, Hanover
(519) 364-3694
www.sbdc.ca

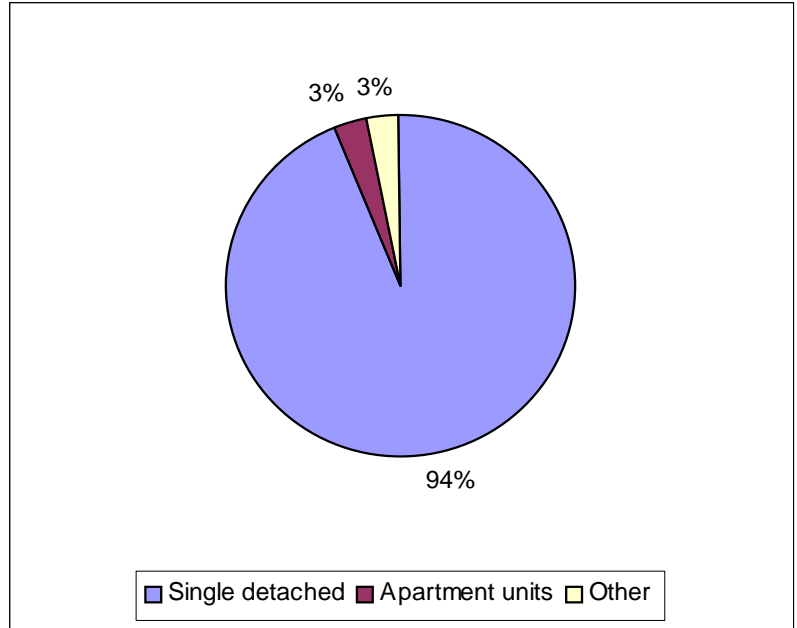
The Saugeen Business Development Centre is a federally supported not-for-profit Community Futures Development Corporation (CFDC) governed by volunteers in partnership with Industry Canada to help develop and diversify local economy by providing

- a) possible term loans up to \$150,000 for equipment, inventory, operating capital, etc;
- b) information related to demographics, labour market and training programs;
- c) information related to government programs and industrial sites;
- d) Community Profiles on participating municipalities; and
- e) quarterly economic newsletters.

HOUSING AND CONSTRUCTION ACTIVITY

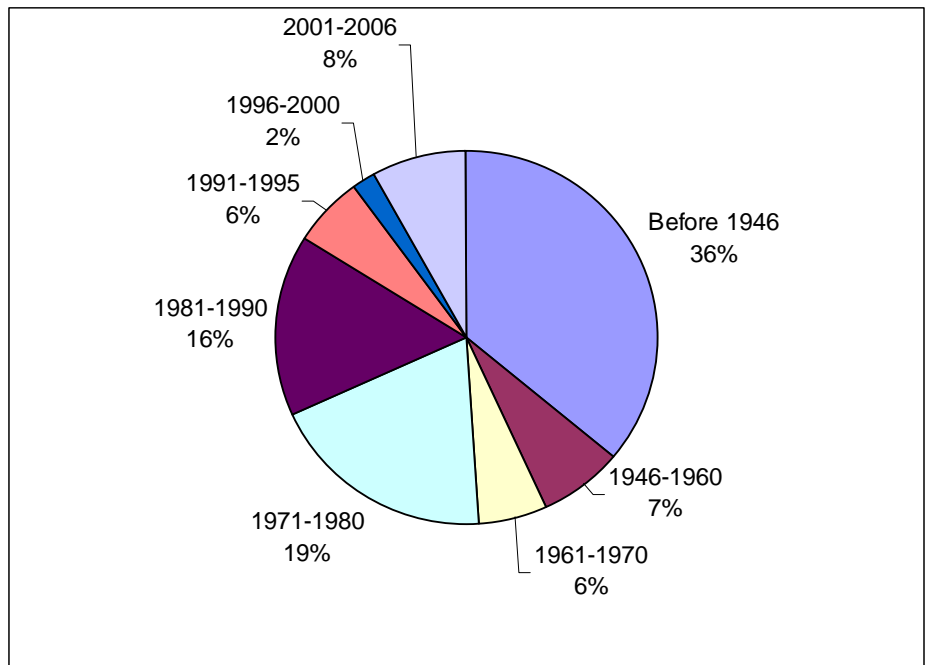
HOUSING STOCK BY STRUCTURAL TYPE

Single-Detached	2,220	
Semi-Detached	20	
Row-Housing	5	
Apt., detached duplex	30	
Apt. building, > 5 storeys	0	
Apt. building, < 5 storeys	45	
Other single-detached house	10	
Movable Dwellings	40	
Total	2,365	
Owned	2,195	
Rented	175	



HOUSING STOCK BY PERIOD OF CONSTRUCTION

Before 1946	855
1946-1960	160
1961-1970	135
1971-1980	455
1981-1990	370
1991-1995	150
1996-2000	50
2001-2006	195
Total	2,370



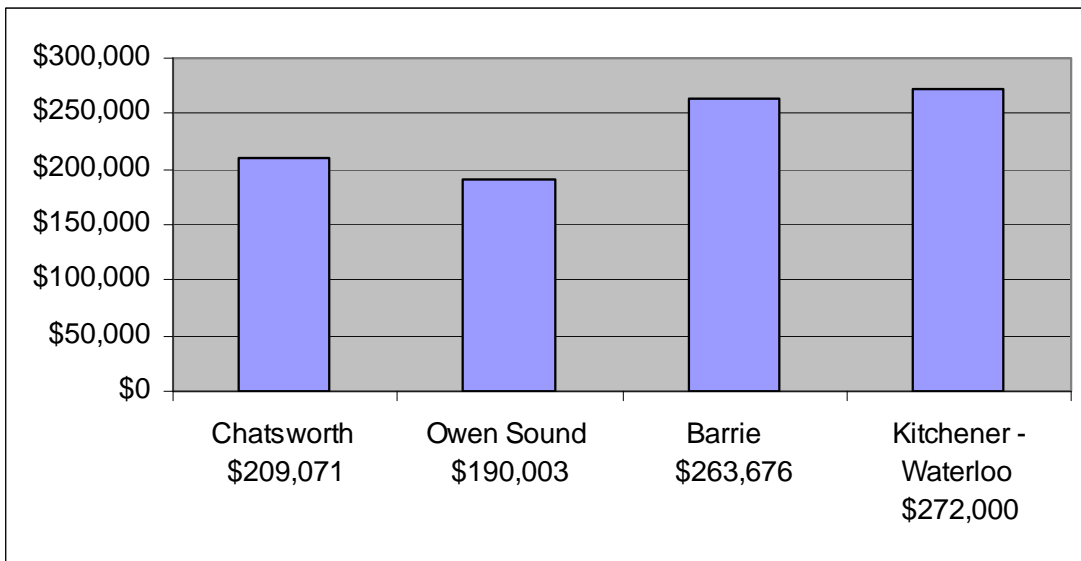
Source: Statistics Canada 2006

HOUSING AND CONSTRUCTION ACTIVITY

Building Permits

No data available.

Average Residential Selling Price for 2008



Source: K-W Real Estate Board, Simcoe Real Estate Board and the Grey-Bruce-Owen Sound Real Estate Board

LOCAL MUNICIPAL GOVERNMENT

Form of Government

The Township of Chatsworth is governed by an elected council consisting of a Mayor, a Deputy Mayor, and three councillors, elected for a three year term.

Tax Structure

Tax rates vary according to zoning classification of individual properties. Please contact the township for tax rates.

Fire Protection

The Chatsworth Fire Department and the Markdale Fire Department provide fire protection.

Law Enforcement

The Township of Chatsworth provides Policing services to their residents through a policing contract with the Ontario Provincial Police.

POWER AND UTILITIES

Electricity

The Township of Chatsworth is largely served by Hydro One. For distribution and transmission rates, visit www.hydroonenetworks.com.

Fuel Oil & Natural Gas

Fuel oil is supplied to the Township of Chatsworth by a number of distributors including Huron Bay Co-operative Inc. Please contact the distributor directly for current rates. Please consult your local yellow pages directory for other available fuel oil distributors.

Union Gas supplies the village of Chatsworth with natural gas. Contact the company for the monthly consumer charge.

Garbage & Industrial Waste Removal

Chatsworth provides weekly garbage collection to all residents. Garbage is collected by a private contractor and taken to the appropriate municipal landfill site. Recycling is collected at the curbside for all residents on a bi-weekly basis.

Water & Sewer

The township is generally served by private wells with the exception of the villages of Chatsworth and Walter's Falls, which are serviced by municipal water. Please contact the township at (519) 794-3232 for water rates.

Sewage disposal in the township is the responsibility of each individual property owner by way of septic system.

INDUSTRIAL SERVICES

Sites Available

Please contact the municipality for available industrial land.

TRANSPORTATION

Air Transportation

The Saugeen Municipal Airport, located just outside Hanover on County Road #2, is the Saugeen community's key to the provincial airport network, offering quality service to both recreational and commercial traffic.

Runway 01/19 is approximately 4,000 feet in length and 75 feet in width. The secondary runway 09/27 is approximately 2,500 feet in length and 50 feet in width. Both runways are maintained year round and service is available 365 days of the year between 9:00 a.m. and 5:00 p.m. The professionally maintained runways are capable of servicing and accommodating small to midsize corporate jets and larger commuter-type turbo-prop aircraft. Charters and flight training are available as well as food and catering on a daily basis. The Saugeen Municipal Airport also offers Canada Customs clearance on an as needed basis.

For more information, phone (519) 364-3220, or fax (519) 364-7733.

The Billy Bishop Regional Airport is located 5.6 km east of Owen Sound on Highway 26. For more information, please call 519-371-6936 or fax 519-371-5197.

Water Transportation

Commercial harbour facilities are located at Goderich, approximately 90 km southwest of Brockton. This harbour is open to Great Lakes shipping from mid-May to early January, depending upon prevailing ice conditions on the lakes.

Commercial harbour facilities are also situated in Owen Sound. This harbour offers between 600 and 700 metres of dockage for large lake freighters at a depth of approximately 6.5 metres. The harbour also offers grain elevator facilities and bulk cement silos with an estimated 15,000 tonne capacity. Loading equipment is generally contained on the incoming freighters, however, equipment is available in Owen Sound through a private contractor.

FINANCIAL SERVICES

Chartered Banks

Chatsworth is home to a branch of the Bank of Montreal. Chesley provides a branch of the CIBC.

Community Futures Development Corporation

The local CFDC, Saugeen Business Development Centre, provides financial and technical assistance to small businesses. The maximum loan is \$150,000. It is located at 554 7th Avenue, Hanover. The phone number is (519) 364-3694 or visit the website www.sbdc.ca.

Business Development Bank of Canada

The nearest branch of this organization is located in Stratford, Ontario and can be contacted by telephone at (519) 271-5650 or toll free 1-800-265-2489.

Other Financial Institutions

Insurance Brokers and several financial planning consultants and stock brokers can be found in nearby municipalities. Please consult your local yellow pages for a listing in your area.

COMMUNITY FACILITIES

Health Care

South Bruce Grey Health Centre - Chesley (formerly the Chesley & District Memorial Hospital) offers 24 hour Emergency Service and a variety of ambulatory health services including specialty clinics, laboratory, diagnostic, and electrodiagnostic imaging, physiotherapy and dietary counseling. Day Program supports the elderly living in their homes. Inpatient services include medical and chronic beds. There are currently five Family Practice physicians servicing the medical needs of the community in a modern medical clinic.

South Bruce Grey Health Centre - Durham (formerly Durham District Memorial Hospital) offers 29 beds and provides a number of local medical services including access to specialized clinics, laboratory, diagnostic, and electrodiagnostic imaging, physiotherapy and nutritional counseling. Emergency Services are available Monday through Friday from 7:00 a.m. to 7:00 p.m. Emergency Services outside these hours are available in Chesley, Walkerton, Hanover, Markdale, Mount Forest or Owen Sound.

Centre Grey Hospital, Markdale is a primary care community hospital serving about 12,000 residents as well as a large seasonal population, and is a rural site of Grey Bruce Health Services (www.gbhs.on.ca). It provides inpatient care, day surgery, out-patient emergency services, palliative care and a range of ambulatory services. There are excellent lab, diagnostic imaging, ultrasound and physiotherapy services. Visiting specialists add to the range of health services provided. Digital radiography equipment and PACS are in place. Emergency Services are available 24 hours.

Meaford's Hospital is one of six hospitals operated by Grey Bruce Health Services since a voluntary amalgamation of the northern hospitals in Grey and Bruce Counties in 1998. The hospital offers a wide range of inpatient and outpatient services in Meaford and patients can access specialty care through the integrated health care services provided by Grey Bruce Health Services to the broader region. For more information about the Meaford hospitals range of programs and services follow this link to Grey Bruce Health Services' web site at www.gbhs.on.ca.

Of all of GBHS' rural hospitals, Meaford offers the widest range of specialty clinics and services to its community. Specialists from Owen Sound and other larger centres travel to Meaford to offer general surgery, orthopedics, dermatology, plastics and mental health services. The Meaford area has the highest percentage of seniors in Grey and Bruce. The 20-inpatient beds provide access to hospitalization when those seniors and other residents need them. 116 GBHS staff support these inpatient and outpatient services.

The Grey-Bruce Regional Health Centre, located near Owen Sound, is the areas largest and most modernly equipped facility. This hospital serves as a base educational and training hospital and offers services associated with hospitals situated in much larger centres.

The Bruce-Grey-Owen Sound Health Unit provides a variety of services to the Saugeen area, including a school health program, a dental health team, family planning, prenatal classes, nutrition and diet counselling and immunization programs.

Para-Med Home Health Care services all of Grey and Bruce counties. Operating out of Owen Sound, Para-Med offers private nursing, homemaking, childcare, Acquired Brain Injury Care and Life Line services.

The Victorian Order of Nurses, based in Owen Sound, provides a variety of home support services including mother and infant care, palliative and supportive care, insurance services, intravenous therapy and private duty (shift) nursing. These services are rendered throughout Grey and Bruce counties.

COMMUNITY FACILITIES

Retirement Homes and Communities

Chatsworth Retirement Home is located at 187 Garafraxa Street and can be reached by phone at 794-3145.

Country Lane Nursing Home is located in Chatsworth. They can be reached by phone at 794-2244.

The County operates three Long Term Care Facilities; Rockwood Terrace in Durham, a facility with 100 beds, Grey Gables in Markdale which has 66 beds, and Lee Manor in Owen Sound which has 150 beds.

The County Homes provide nursing care, dietary services, activities, therapy, socialization and assistance to its residents to optimize the enjoyment and independence of their lives.

Rockwood Terrace, in Durham, is a 100 bed long term care facility owned and operated by the County of Grey and the Province of Ontario. It offers 24-hour registered nursing supervision and medical care in a home-like setting. There is a full calendar of entertainment and special events for the residents.

There are presently three retirement communities and homes in Chesley, Brittany Villa, Elgin Abbey and Parkview Manor. Located in Hanover are the Hanover Care Centre and the Village Seniors' Community.

Additional Community Services

Bruce, Grey and Huron Disability Transportation Network provides transportation for the physically challenged and the elderly.

Township of Chatsworth residents have access to the Owen Sound and North Grey Union Public Library located at 824 1st Avenue West in Owen Sound. The telephone number is 376-6623. Residents are also encouraged to visit the Bruce County library branch in Chesley and the Grey County library branch in Durham, Hanover and Markdale. Each library is home to a complete reference centre for adults and children, with access to films, foreign language publications, video cassettes and talking books.

Cultural Events

The Saugeen City is very diverse in its cultural offerings. There are several theatre groups, which perform local stage entertainment, with proceeds from these performances going toward future productions, bursaries and community projects. Various local, national and internationally renown artists have performed in the area, including the Bell Canto Singers, Saugeen Bach Music Festival and the Grey-Bruce Singers. The Midwestern Ontario Rotary Music Festival is held each spring, in Walkerton, and provides a rich array of musical talent in piano, strings, brass, voice, and dance. There are amateur and professional categories for all ages. The festival offers participants an opportunity to perform before live audiences. The communities also offer movie theatres, art galleries and museums celebrating the region's rich agricultural heritage.

Churches

The community offers a number of churches representing a wide-variety of denominations, including Anglican,

Baptist, Lutheran, Mennonite, Missionary, Pentecostal, Presbyterian, Roman Catholic, and United.

COMMUNITY FACILITIES

Community Service Clubs

Chatsworth is served by a variety of community service organizations including, but not limited to, the local chapters of the Kinsmen and Kinette Clubs.

Special Community Events

The Keady market is open every Tuesday. Local vendors sell their wares including fresh produce, candy, toys, crafts and more. Keady Livestock Arena is located here as well.

Recreational Facilities & Parks

The Township of Chatsworth is home to community centres with ice arenas and halls for meetings, banquets and receptions. Residents can remain occupied with the many activities in the area, including camping, fishing, hiking, walking, curling, figure skating, volleyball and much more. There are organized leagues for hockey, soccer and baseball.

COMMUNITY RETAIL FACILITIES

Department Stores

The Township of Chatsworth is home to variety stores, hardware stores, coffee shops, farm equipment dealers and restaurants.

Shopping Centres

The municipality is centrally located within a short drive on good roads to a number of regional and local shopping malls.

Grocery Stores

Chatsworth's grocery shopping needs are met by a number of markets in local communities. The village is home to D&B Country Market, which incorporates grocery, produce, a meat counter, gift shop, ATM and dry cleaning outlet under the same roof, and the Six and Ten Mini Mart, who in addition to providing groceries is also an LCBO agency store.

COMMUNICATION MEDIA

Newspapers

In addition, the Sun Times which is a daily paper published in Owen Sound, is available to the Saugeen City.

A variety of national and regional papers are also available within the community, among them the Toronto Star, London Free Press and the Kitchener-Waterloo Record.

Television

A-Channel, broadcasting from London and CKCO TV, from Kitchener, report area news on a regional basis.

Persona provides cable TV service.

Radio

The Township of Chatsworth is served by Bayshore Broadcasting which runs CFOS 560 AM, MIX 106 (106.5 FM), Country 93 (93.7 FM), 97.7 & 98 THE BEACH, as well as CKNX 920 AM and 101.7 FM from Wingham. CBC Radio is also available on 96.8 FM.

Postal and Courier Services

The community is served by post offices located in Chatsworth and Williamsford. These offices offer Priority Post, a postal courier network service offering next day delivery to points within Ontario. Courier services available to the area include Federal Express Canada and Purolator Courier. These agencies offer local, national and international service.

Internet Service Providers

The Township of Chatsworth is serviced by Bell Canada Sympatico, Eastlink and Everest Communications.

EDUCATION

Primary and Secondary Schools

PUBLIC

Primary Schools
Holland Chatsworth Central School (Holland Centre)
Sullivan Community School (Desboro)

Secondary Schools
Chesley District High School (Chesley)

SEPARATE

Primary Schools
Notre Dame Catholic School (Owen Sound)
St. Basil's School (Owen Sound)
St. Peter's & St. Paul's Separate School (Durham)

Secondary Schools
St. Mary's High School (Owen Sound)

Post Secondary Facilities

The nearby Owen Sound Campus of Georgian College offers a full schedule of extensive college-level education programs. This facility is at most a 50-minute commute from Saugeen City.

Universities and colleges are located in Barrie, Guelph, Kitchener, London, Toronto and Waterloo and are within a 2 hour drive from Saugeen City.